

EUROCAT Data Management Software

Set up

Table of contents

1. Installation

1. DMS application
2. R distribution for EUROCAT

2. Software update

3. Software initialisation

4. Finish the first setup

Installation

Please contact the [JRC-EUROCAT central registry](#): we will send you the links to download the set-up files.

There are two executable files to install:

1. Eurocat DMS Setup.exe

This file will install the DMS application (interface and plugins defining the EUROCAT specifications).

[Pages 4 to 6](#) describe the various steps of the installation.

2. R distribution for Eurocat DMS.msi

Various functionalities in the DMS are programmed in R (e.g. Statistical surveillance of trends).

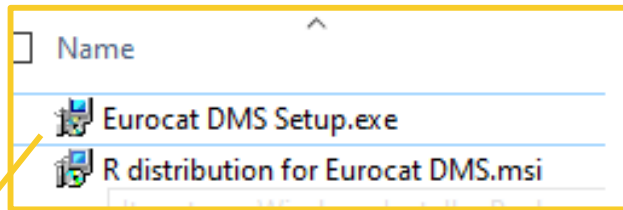
This file will install the R distribution used by the EUROCAT DMS and the relevant libraries.

[Pages 7 and 8](#) describe the various steps of the installation.

Install the DMS application (1/3)

Please contact the [JRC-EUROCAT central registry](#) asking for the DMS set-up programs.

Use the link and password provided by the central registry to download the files.

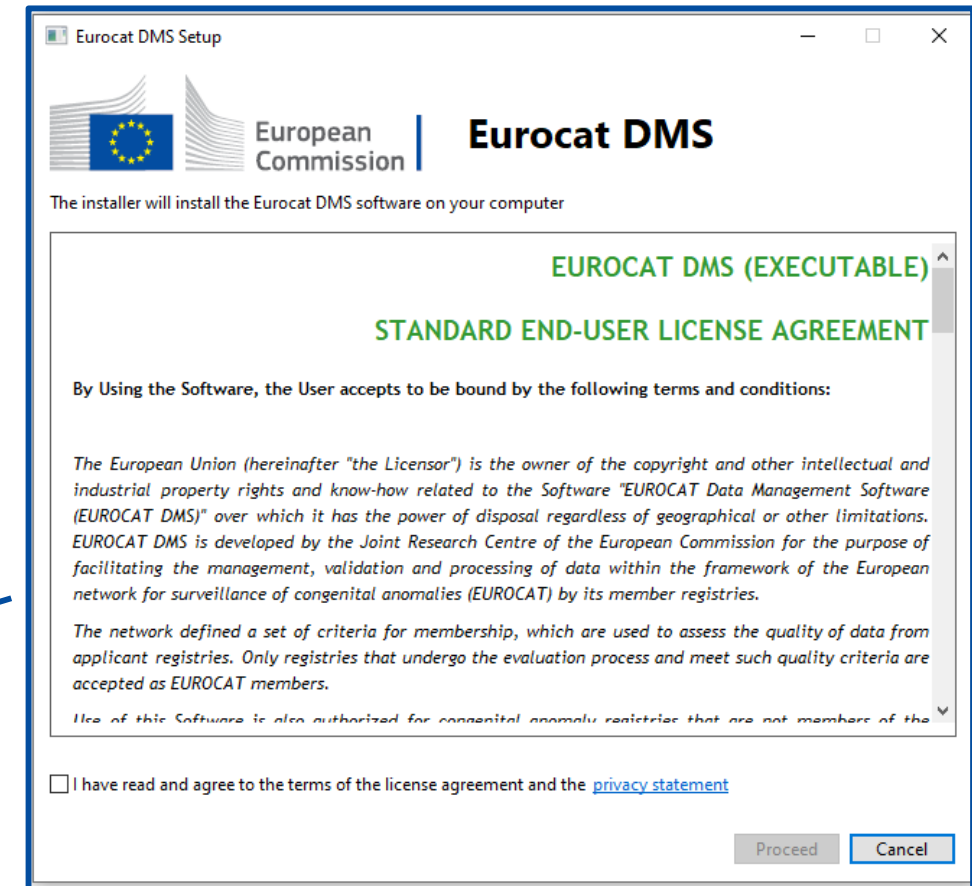


Open the Eurocat DMS Setup.exe

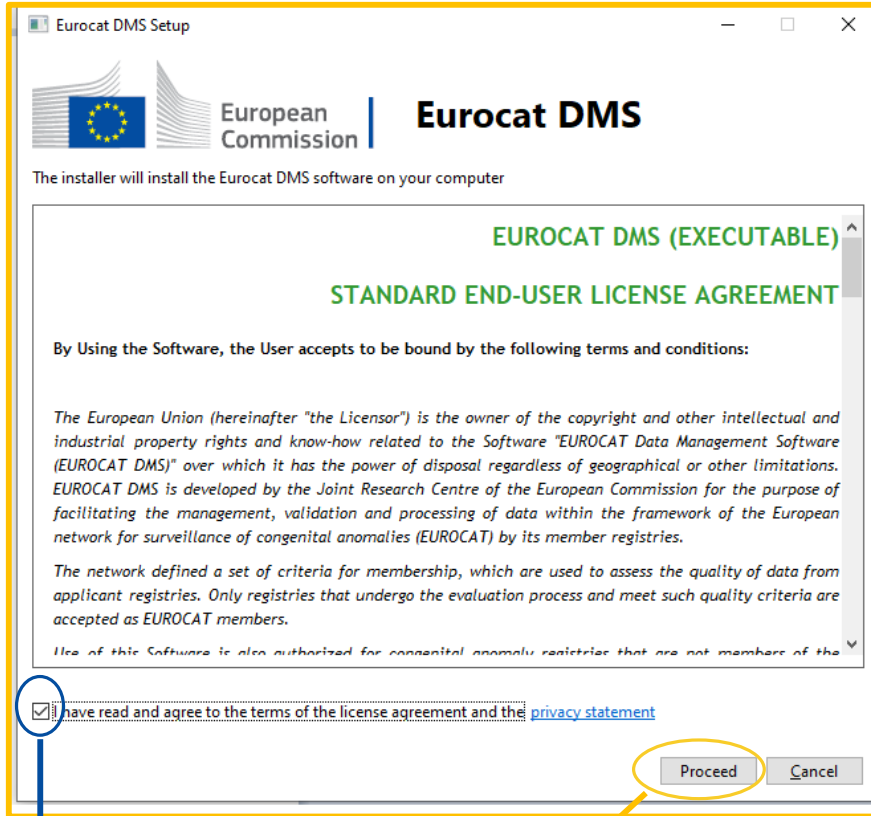
You may need to require administrative privileges depending on your computer configuration.

If DMS is already installed on your PC, DO NOT uninstall it before running the Eurocat DMS Setup.exe

A window with the license agreement will appear. Please read it carefully.

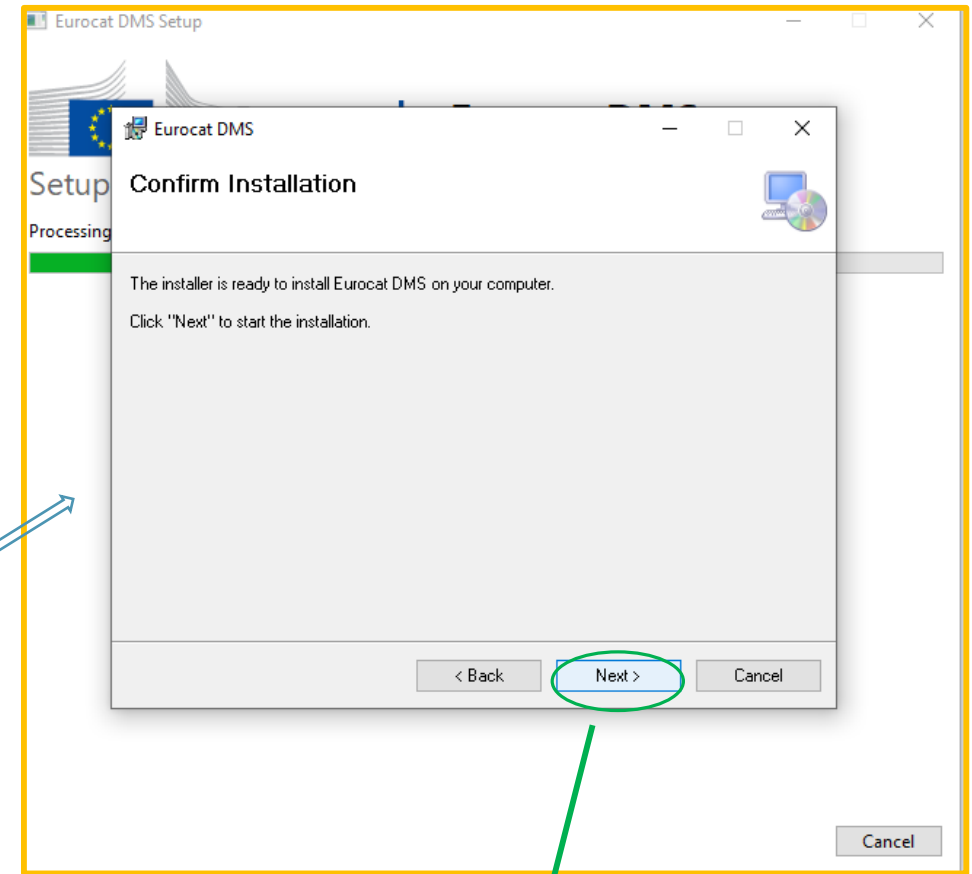


Install the DMS application (2/3)



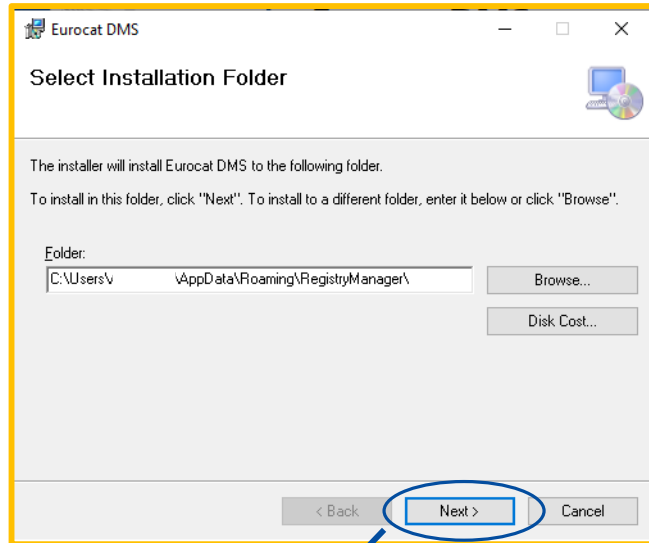
1. Accept the terms of the license

2. Click on proceed to launch the installation

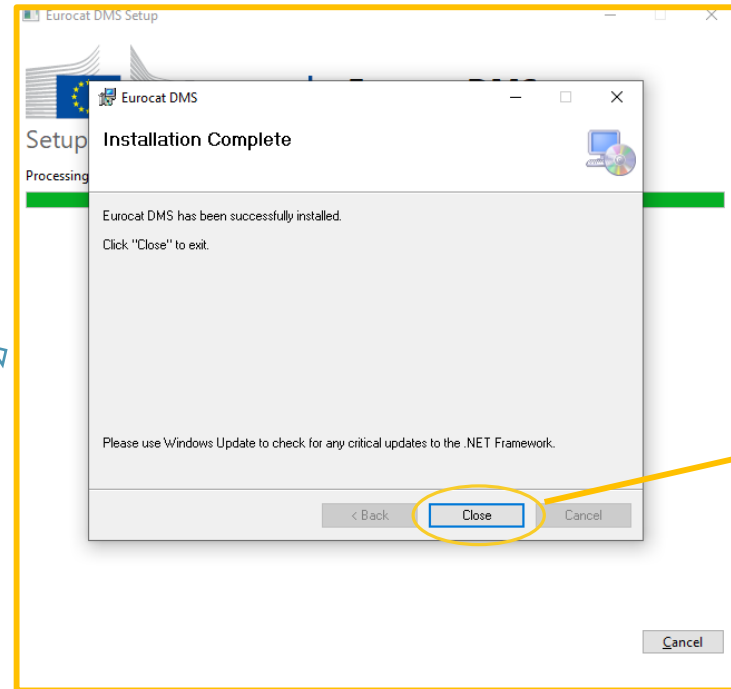


3. Click on Next to confirm the installation

Install the DMS application (3/3)



1. Click next to confirm the location of the installation file (do not change it)



2. When the installation is complete, click close twice to exit.



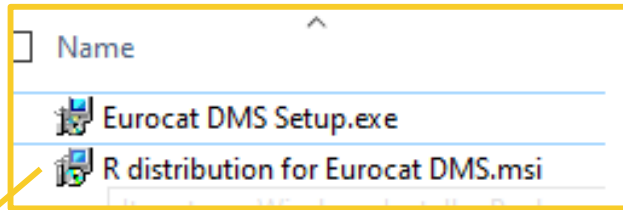
3. The DMS program icon can be found on your desktop:



Install the R distribution for EUROCAT (1/2)

Please contact the [JRC-EUROCAT central registry](#) asking for the DMS set-up programs.

Use the link and password provided by the central registry to download the files.

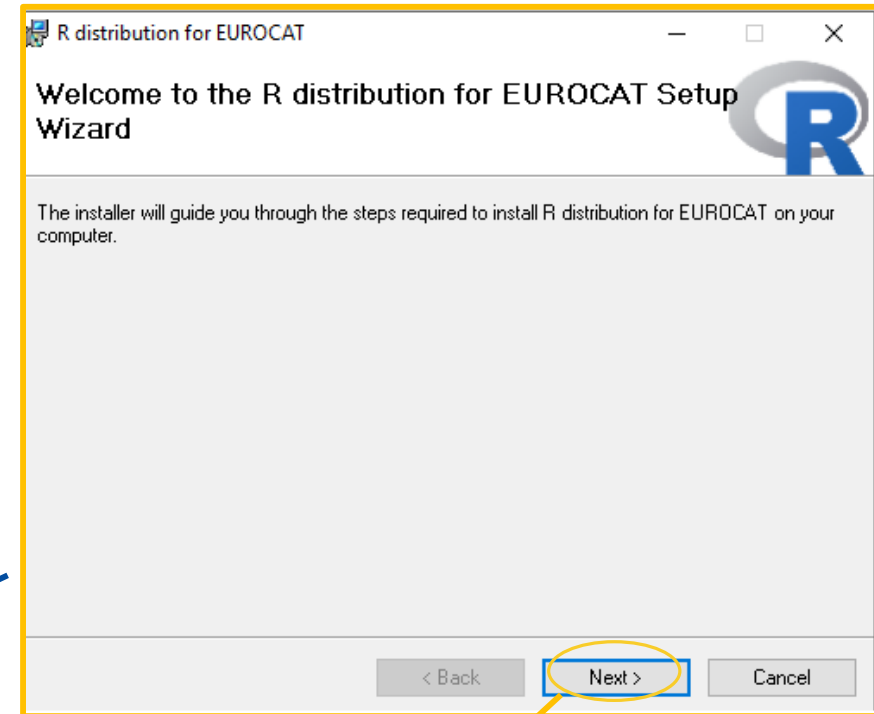


Open the R distribution for EUROCAT DMS.msi

Run this setup file on the user Windows profile. You may need to require administrative privileges depending on your computer configuration.

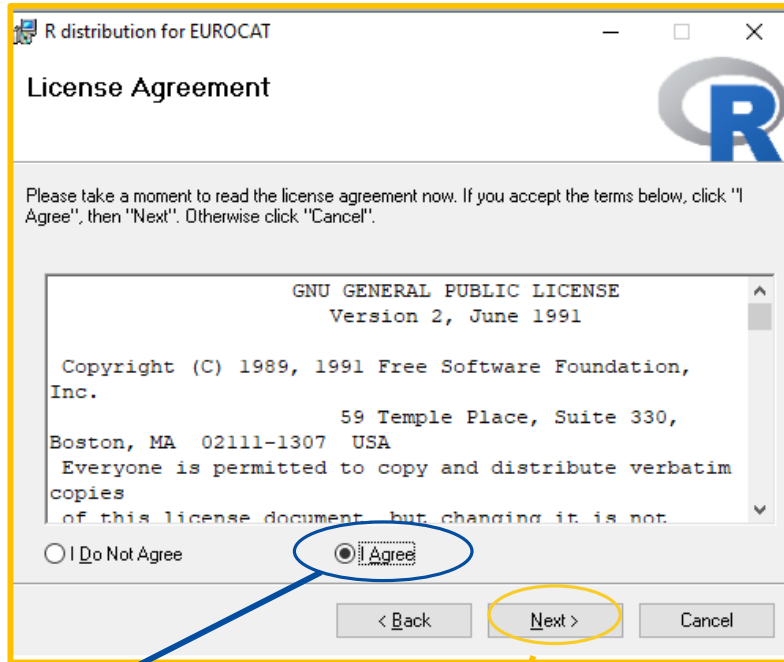
If the R distribution for DMS is already installed on the PC, uninstall it first (see Windows settings/Apps).

A window with the installation wizard appears. Proceed step by step.



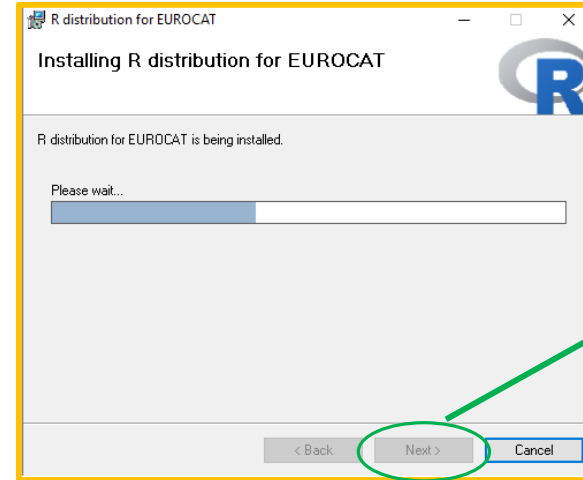
1. Click on Next to start the installation

Install the R distribution for EUROCAT (2/2)

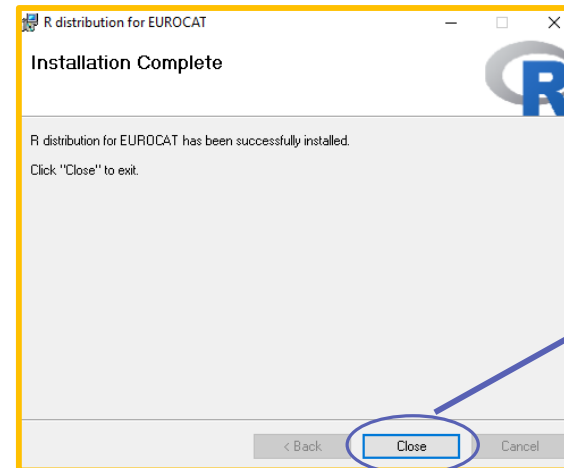


1. Read and agree with the license agreement

2. Click on Next to launch the installation



3. Follow the installation progress and click Next when finished



4. Close the wizard when the R distribution for EUROCAT has been installed successfully

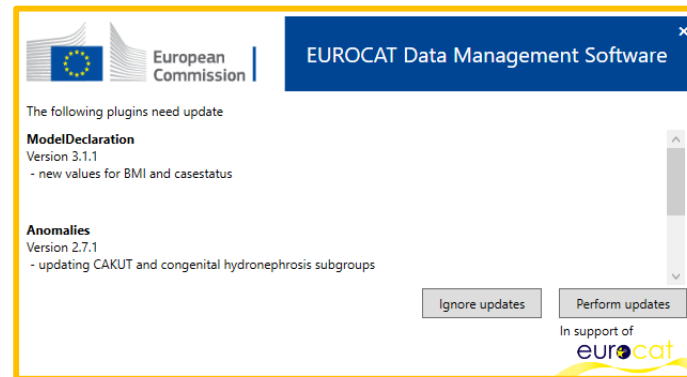
Software update

1- Make sure you have an internet connection

The software will search for updates automatically upon execution.

2- Accept the updates

If updates are available, the software will prompt you to perform them and, upon positive response, will proceed to automatically download and install them.



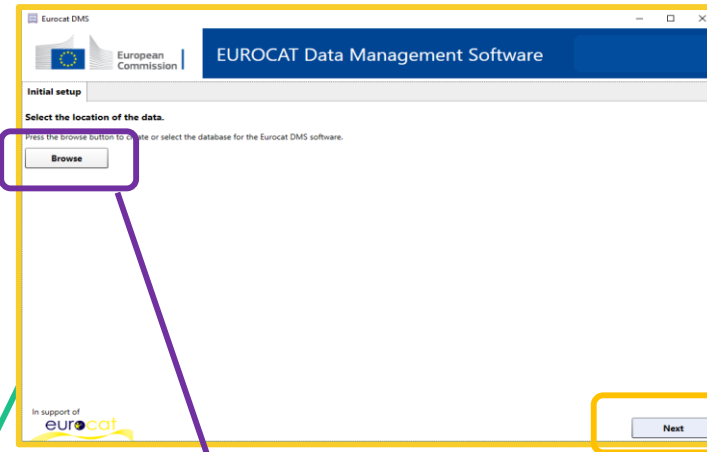
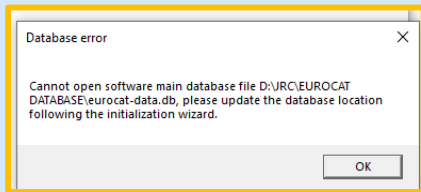
3- Always keep the software updated to the latest version

It is highly advised to regularly run the software while the computer has internet connectivity.

Software initialisation (1/2)

Upon first execution, the software will open the initialisation procedure.

In case you receive the following error, disregard it and click OK)



You are asked to specify where the software should store the data.

Press **Browse** and navigate to the relevant location. You can rename the database as you wish (by default the database will be called *eurocat-data.db*).

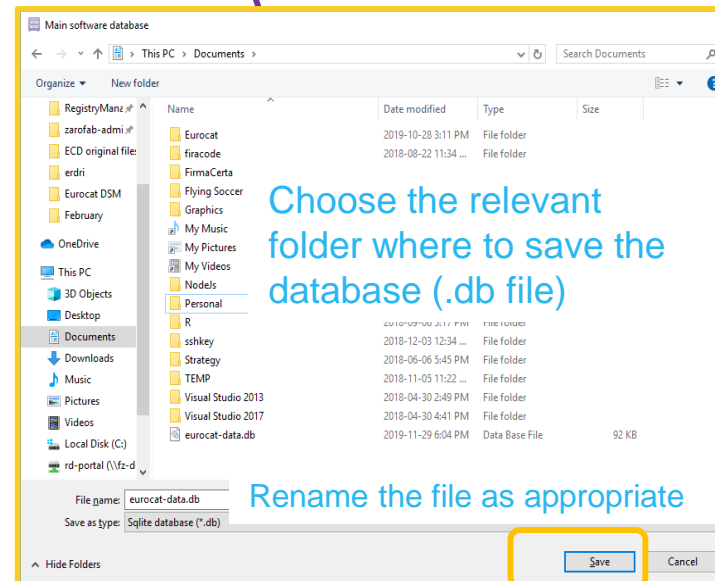
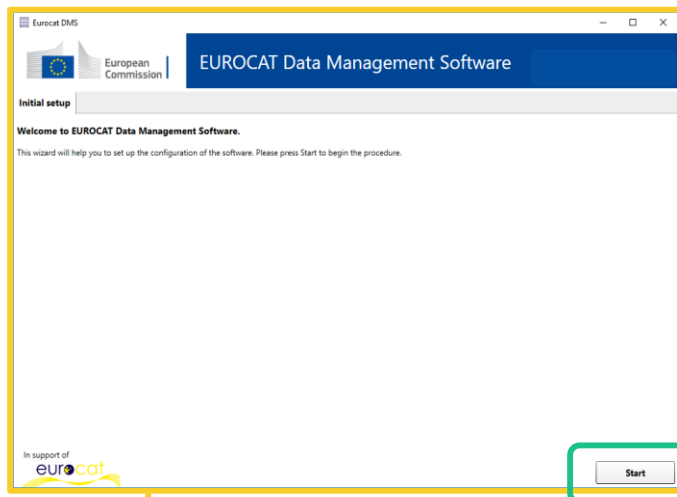
If you already have an Eurocat DMS database, just navigate to the folder containing it (it can be a network path) and select it.

Press Save, then Next.

Note:

- Ask your IT support for existing procedures to store sensitive data.
- Store the database in a secure location, with limited access and on a computer with controlled internet access.
- Multiple people can connect to the same database and work concurrently.
- To give some users read-only access, set only permission to read through Windows security.

1- Initial database location



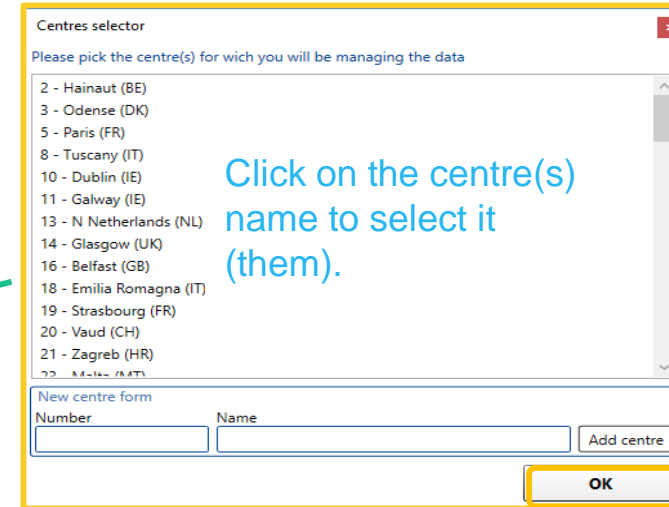
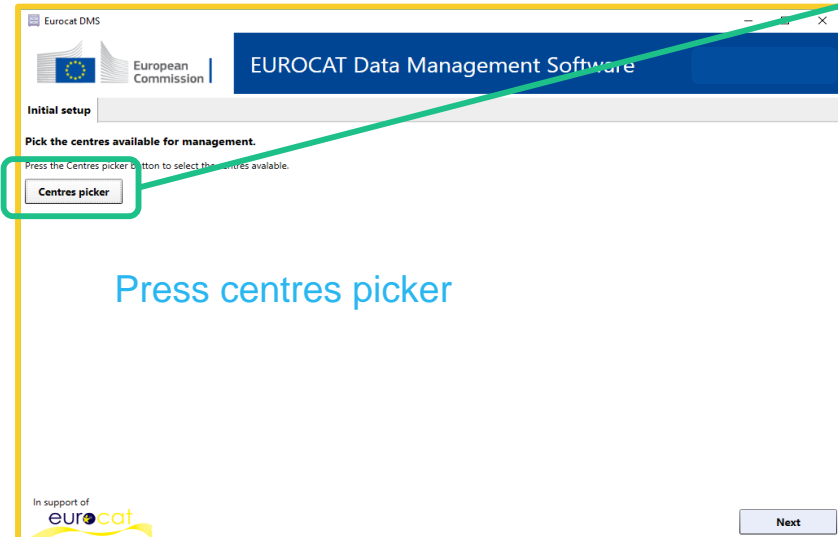
Software initialisation (2/2)

2- Initial centres selection

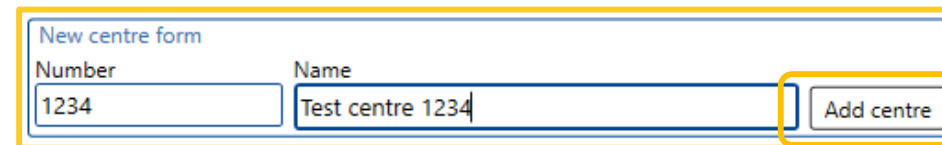
The software asks you to specify the centres you want to manage.

This procedure will be skipped in case you specify an existing Eurocat DMS database, where the centres have already been initialized.

A window will open where you can select the centre(s).
Press **OK** to confirm the selection.



If a centre is not present in the list, you can simply add it by compiling the *New centre form*. Press **Add centre** then **OK**. It is advised to choose a 4-digit number to avoid confusion with existing centre numbers.

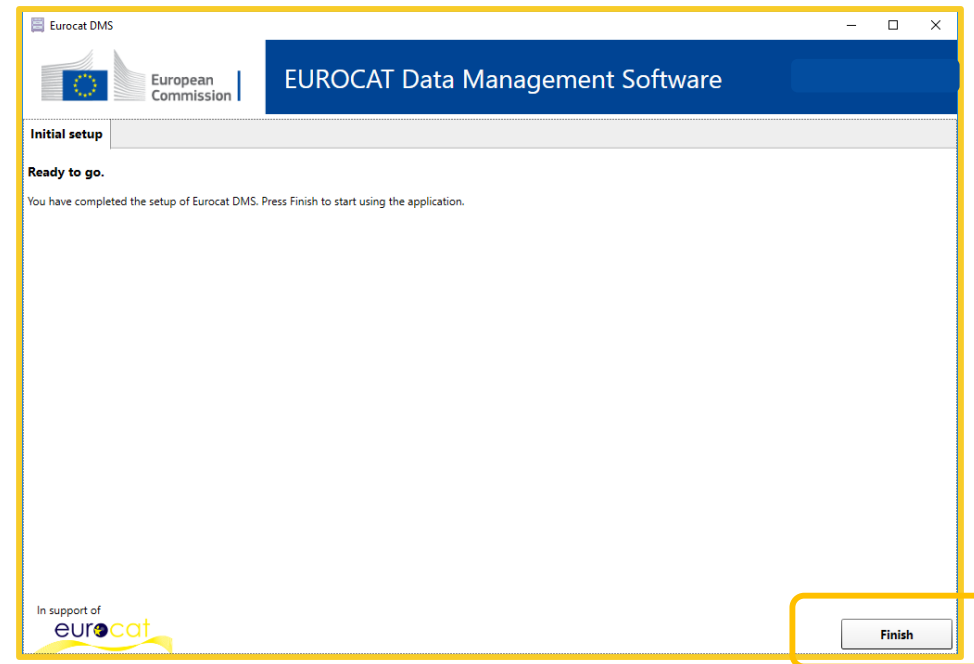


The software will add the selected centres to the database and they will be available for data management. If you forget any centre, you can always add it later through the Add centre functionality. See [chapter IV – Data Configuration](#).
Press **Next** to finish.

Finish the first setup

The software will show you the completed setup information page.

Press **Finish**. The software will open the main interface where you can perform all operations.



This presentation has been prepared for internal purposes. The information and views expressed in it do not necessarily reflect an official position of the European Commission or of the European Union.

Except otherwise noted, © European Union (2023). All Rights Reserved