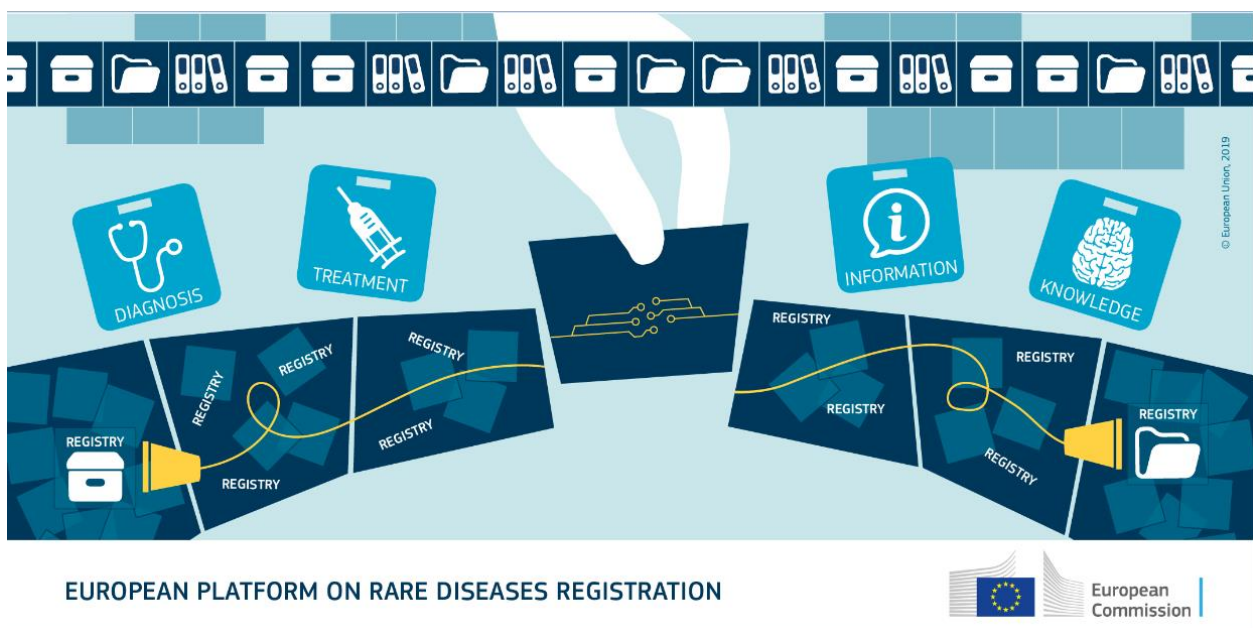




# European Platform on Rare Disease Registration (EU RD Platform)

## The European Rare Disease Registry Infrastructure

### ERDRI User Access Guide



### *User Documentation 1.0*



## Table of Contents

1	About this document .....	3
2	Aim of the system .....	3
3	User access and functions .....	3
3.1.	Unidentified Users .....	6
3.2.	Authenticated Users .....	6
3.3.	Verified Users .....	8
4	Contact and technical assistance.....	10



## 1 About this document

This documentation provides a guide for the different user cases on how each type of user can access the European Rare Disease Registry Infrastructure (ERDRI) and in particular its tools.

<https://eu-rd-platform.jrc.ec.europa.eu/erdri-description>

## 2 Aim of the system

The European Rare Disease Registry Infrastructure (ERDRI) is part of the EU RD the Platform. Through ERDRI RD patient data will become searchable and findable largely thanks to the informatics tools it provides. ERDRI's three main components are:

- **European Directory of Registries (ERDRI.dor):** ERDRI.dor provides an overview of the ERDRI participating registries with their main characteristics and description.
- **Central Metadata Repository (ERDRI.mdr):** ERDRI.mdr ensures semantic interoperability between RD registries. It has the task to store all definitions of used data elements (metadata) of the participating registries. Metadata describe the meaning of structured data elements.
- **Pseudonymisation Tool (EUPID):** The **Pseudonymisation tool** is provided to all ERDRI participating registries through the European Patient IDentity (EUPID) Management Services.

In this document access instructions to these components for each user case are provided.

## 3 User access and functions

Users can access different parts of ERDRI within the EU RD Platform according to the work flow outlined in figure 1.

## ERDRI – User Cases workflow

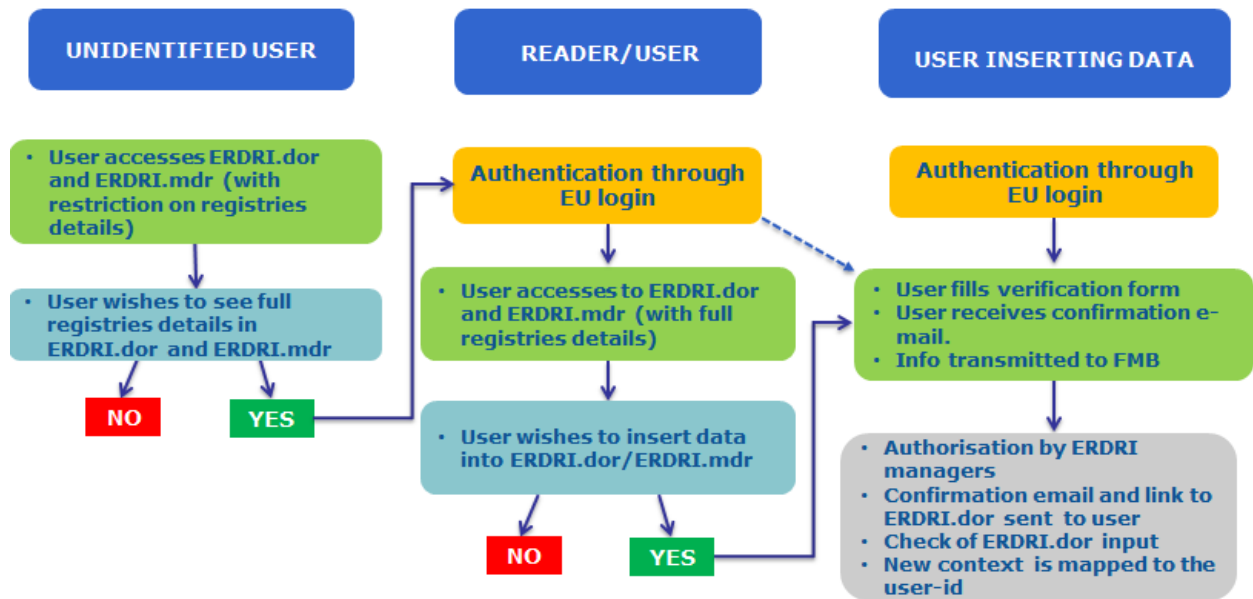


Figure 1. ERDRI user case workflow

In figure 2 the main access page is shown through which ERDRI can be accessed.



European Commission > EU Science Hub > European Platform on Rare Disease Registration

## European Platform on Rare Disease Registration (EU RD Platform)

**Searchable, findable rare disease patient data**

-  European Rare Disease Registry Infrastructure (ERDRI)
-  European standards for data collection and data sharing
-  Trainings  
Latest news

**Data repository**

-  European RD Registry Data Warehouse
-  Surveillance of Congenital Anomalies in Europe
-  Surveillance of Cerebral Palsy in Europe

Figure 2. Accessing ERDRI through the main EU RD Platform page

The Terms of Use should be accepted by each user according to the screen below (figure 3).



## ERDRI terms and conditions

BY USING THE EU RD PLATFORM, YOU ("THE USER") AGREE TO BE BOUND TO THESE TERMS AND CONDITIONS. IF YOU DO NOT AGREE TO ANY OF THE TERMS OR CONDITIONS PROVIDED HEREIN, PLEASE DO NOT USE THIS WEBSITE OR ANY INFORMATION OR TOOLS HEREIN.

I accept the [terms of use](#)

Browse anonymously

Access to limited information (read-only)



I accept the [privacy statement](#)

Proceed to log in

Figure 3. ERDRI Terms and Conditions screen

### 3.1. Unidentified Users

According to this workflow **unidentified users** are able to consult those parts of the EU RD Platform that do not require authentication or verification. This means that they have access to the ERDRI.dor registry list of all registries or search results in ERDRI.dor but with limited information about each registry. This information is accessible by clicking on the "Browse anonymously" button as indicated in figure 3. Users wishing to consult full details of these registries can do so by becoming "authenticated users" (Section 3.2. of this document).

### 3.2. Authenticated Users

A user wishing to consult ERDRI.dor for the list of registries and full description of these registries or a single registry and ERDRI.mdr for browsing the existing registry metadata (**reader/user**) and ERDRI.mdr collection of meta data from the participating registries.

To become an authenticated user you need to have an EU login account. You will be asked to enter your EU login credentials as indicated in figure 4.



Sign in to continue

Welcome back

[Redacted]@ [Redacted]  
(European Commission)

[Sign in with a different e-mail address?](#)

Password

[Input field]

[Lost your password?](#)

Choose your verification method

Password

[Monitor icon]

Sign in

Figure 4. Entering credentials (EU-login)

In case you do not possess already an EU-login you can create one by accessing the "About EU-login" page on the bottom of the same page (figure 5).

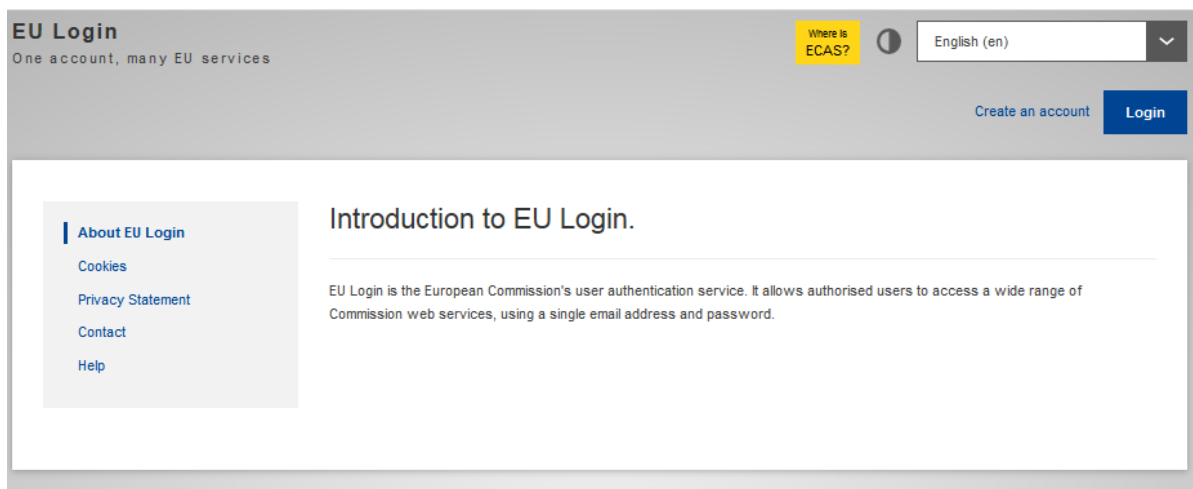
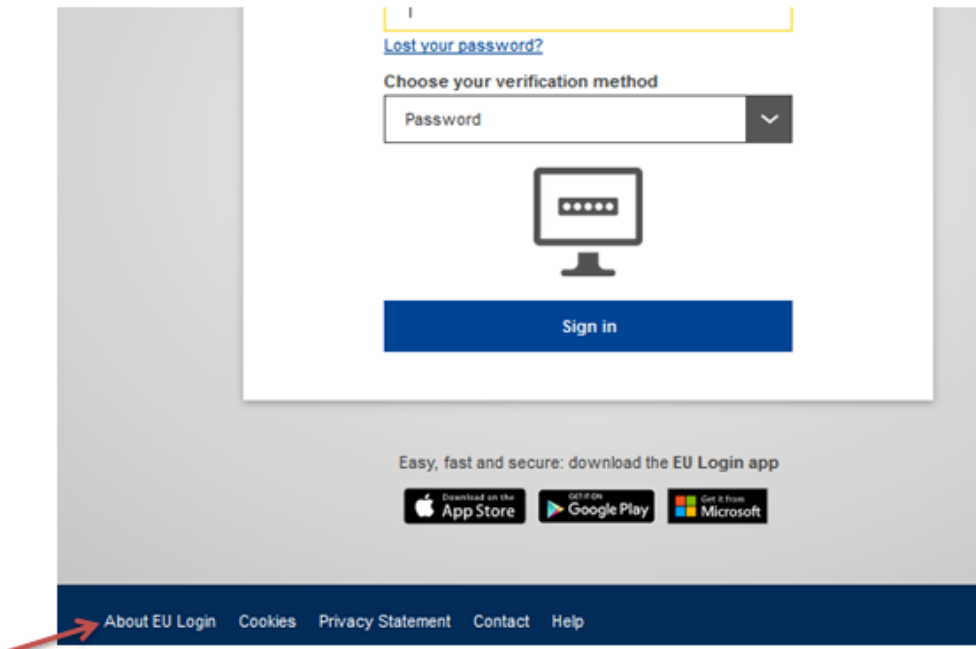


Figure 5. EU login information and creation page

### 3.3. Verified Users

Verified Users are those contributing with information about their registries. They will be able to insert registry information in ERDRI.dor and the meta data information of their registry into ERDRI.mdr ((please consult [ERDRI.dor](#) and [ERDRI.mdr](#) User Documentation for instructions on how to use these tools).

Furthermore access to the pseudonymisation tool (EUPID) is granted only to authorised and verified users. The EUPID access page is displayed in figure 6. In order to register a patient and obtain the EUPID pseudonym, the following conditions must be filled:





1. The registry has already inserted all relevant data in ERDRI.dor
2. The list of users (for a single registry) to be authorized to use EUPID has been **communicated** to JRC Rare Disease group

Once both these conditions have been met, all the users listed in point 2 will be authorized to use the EUPID service.

European Commission > EU Science Hub > European Platform on Rare Diseases Registration > ERDRI > EUPID

## Pseudonymisation through EUPID

### Why EUPID?

EUPID has been designed to facilitate secondary use of datasets in Biomedical Research and Healthcare by addressing the following major requirements:

- prevent duplicate registration of patients
- avoid creating a transparent universal patient ID but
- provide distinct pseudonyms for patients in different contexts
- preserve the possibility for re-identification by a trusted third party
- keep a protected link between the different pseudonyms in the background
- which supports creating merged, datasets for secondary use

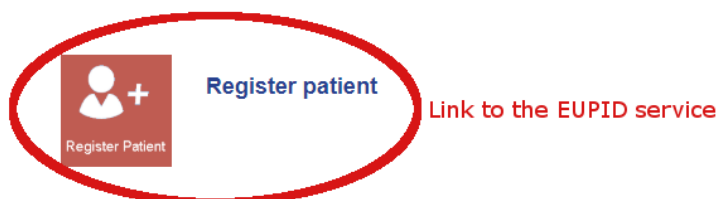


Figure 6. EUPID starting page

To become a verified user a contact form will need to be filled in as follows in figure 7.



European Commission > EU Science Hub > European Platform on Rare Diseases Registration > Contact

## Registration form

### Become a verified user

To be able to use ERDRI tools with all functions enabled you have to be verified. Please fill the form with the requested data and click on the "Submit" button.

Registry name\*

Your role in the registry\*

Registry responsible\*

Registry address\*

Telephone\*

Establishment year\*

Registry institution

Registry is a member of ERN?

ERN's name

Message

What code is in the image?  
Enter the characters shown in the image.

Preview Submit

European Platform on Rare Diseases Registration [Contact](#) [Privacy statement](#)

Figure 7. Contact form for becoming a verified user

## 4 Contact and technical assistance

For any questions you may have regarding ERDRI.dor, please contact us at: [EU-RD-PLATFORM@ec.europa.eu](mailto:EU-RD-PLATFORM@ec.europa.eu) or through the support form in each of the tools <https://eu-rd-platform.jrc.ec.europa.eu/erdri/support/> (figure 8)



[European Commission](#) > [EU Science Hub](#) > [European Platform on Rare Disease Registration](#) > [ERDRI](#) > [Support](#)

## ERDRI Support form

Please describe the problem you are experiencing naming the specific tool and adding all relevant information.

Your name\*

Your email address\*

Subject\*

Message\*



What code is in the image?

Enter the characters shown in the image.

[Preview](#)

[Submit](#)

[European Platform on Rare Disease  
Registration](#)

[Contact](#)

[Privacy statement](#)

Figure 8. Technical support assistance form